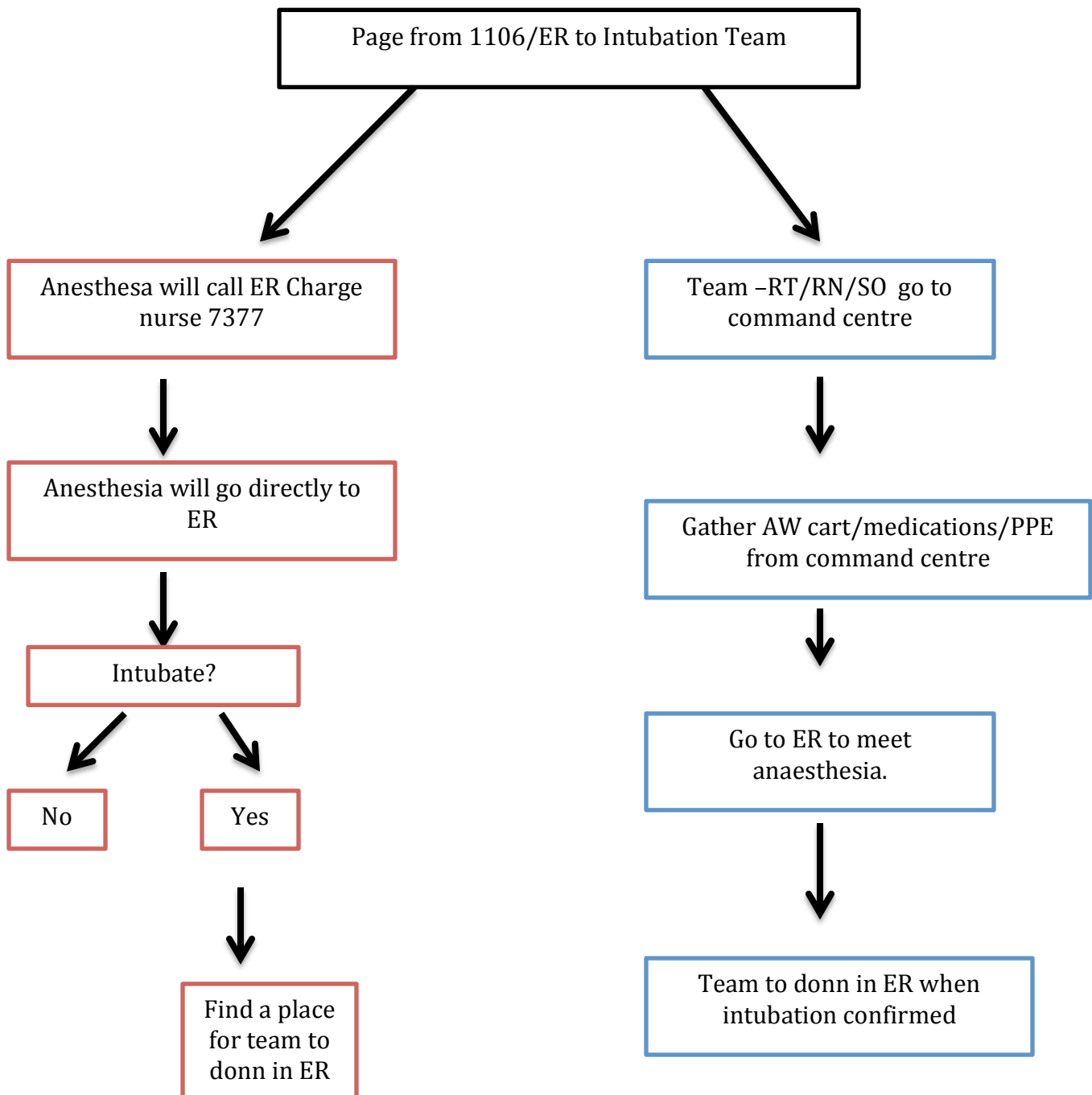


Hi Everyone,  
Here is the update for today

1. Interdisciplinary Simulation/New Process for ED calls to Intubation Team

a. We had an excellent simulation session with our ER colleagues this morning. Will aim for more of these. The debrief lead us to revise our intubation team response to **ER calls only**. See below



## 2. Donn/Doff Learning Session

a. **There will be donn/doff teaching at the command centre at 730am April 3 202 for the airway team.**

## 3. Equipment/Medications

- a. The command centre is up and running (Thank you Alison and Stefan). Go visit, **ensure your badge gives you access.**
- b. When the intubation team has decided to enter a room, please ensure the safety officer has the companion phone on speaker and can communicate to the RN who has the phone on speaker in the room in a zip lock bag. **Ensure the phones are working and on speaker (volume adjusted, etc) before entering the room.**
- c. The “Plan B” (LMA, a second styletted tube, decided by anaesthesia at beginning of shift) will be outside the door on top of the airway box. Have this ready before you enter the room. **RN will use the phone to call SO outside and the “Plan B ” bag will be passed in.**
- d. There are “Hello my name is ” labels we encourage you to put on the outside of your gown (perhaps the shoulder) to identify MD/RT/RN/SO
- e. There will now be a drug tray in the airway cart
- f. N95 9210 standard is mostly stocked in the airway cart. **Notify me if this is not your size.**

## 4. Anaesthesia Assistants

a. The AA'S have asked to be put in the ICU and on Intubation Team in a buddy system with the RT'S for 6 hours each day next week. Thank you for organizing a schedule for this.

Every day we are thinking of ways to make things more efficient, thank you for your understanding.

